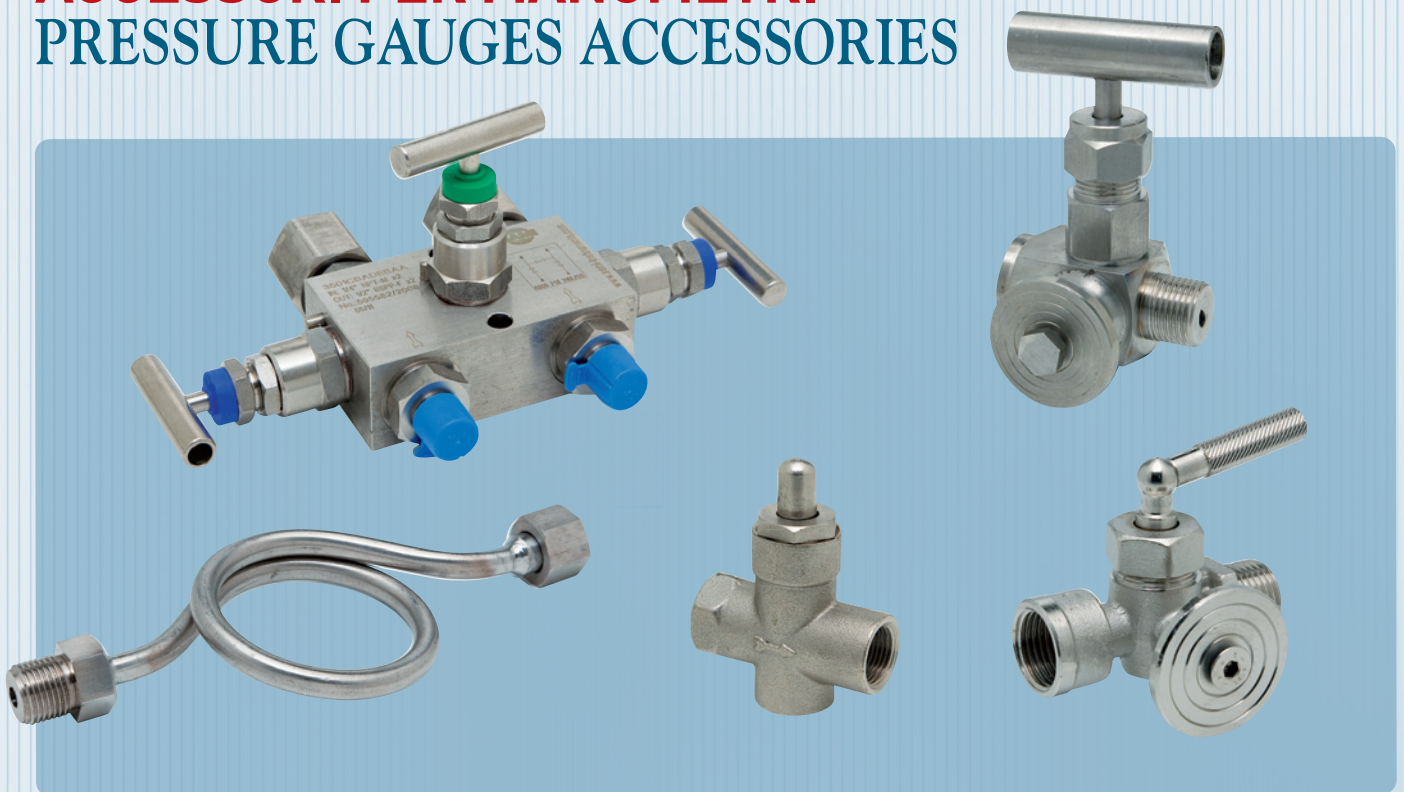


ACCESSORI PER MANOMETRI PRESSURE GAUGES ACCESSORIES



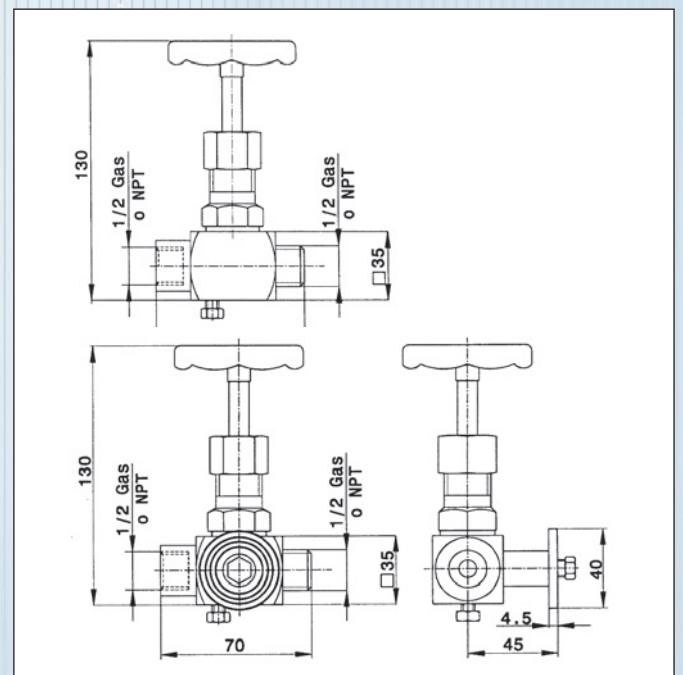
VALVOLE A SPILLO

IMPIEGO:	IMPIANTISTICA GENERICA, INDUSTRIA CHIMICA E PETROLCHIMICA
TIPO:	RICAVATA DA BARRA CON TAPPO DI SPURGO
MATERIALE:	ACCIAIO AL CARBONIO / AISI 316
CONNESSIONI:	GAS / NPT
LIMITI IMPIEGO:	400 BAR a 100°C

NEEDLE VALVES

USE:	PROCESS, CHEMICAL AND PETROCHEMICAL INDUSTRY
TYPE:	BARSTOCK WITH DRAIN PLUG
MATERIAL:	CARBON STEEL / AISI 316 st. st.
CONNECTIONS:	GAS / NPT
WORKING LIMITS:	400 BAR at 100°C

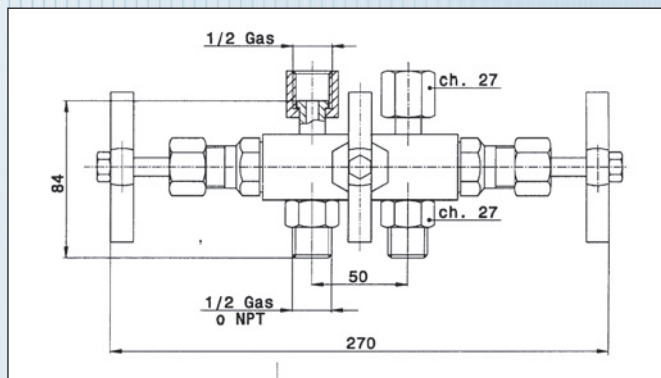
MODELLO MODEL	VIE WAYS	ATTACCO CONNECTION	MATERIALE MATERIAL
RV2/F1 RV2/F3	2 2	MxF 1/4" GAS MxF 1/2" GAS	ACCIAIO AL CARBONIO CARBON STEEL
RV3/F1 RV3/F3	3 3	MxF 1/4" GAS MxF 1/2" GAS	
RV2/S1 RV2/S2 RV2/S3 RV2/S4 RV2/S5 RV2/S6	2 2 2 2 2 2	MxF 1/4" GAS MxF 3/8" GAS MxF 1/2" GAS MxF 1/4" NPT MxF 3/8" NPT MxF 1/2" NPT	INOX AISI 316 ST. ST. AISI 316
RV3/S1 RV3/S2 RV3/S3 RV3/S4 RV3/S5 RV3/S6	3 3 3 3 3 3	MxF 1/4" GAS MxF 3/8" GAS MxF 1/2" GAS MxF 1/4" NPT MxF 3/8" NPT MxF 1/2" NPT	



VALVOLA MANIFOLD

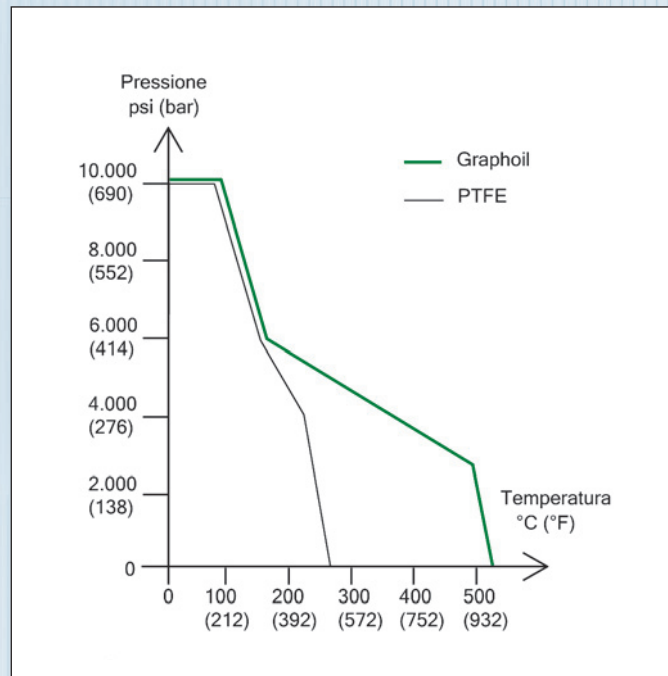
IMPIEGO:	IMPIANTISTICA GENERICA, INDUSTRIA CHIMICA E PETROLCHIMICA
TIPO:	A 3 VALVOLE - RICAVATA DA BARRA PER MONTAGGIO DIRETTO
MATERIALE:	AISI 316
CONNESSIONI:	GAS / NPT
GUARNIZIONE TENUTA:	PTFE (GRAPHOIL OPZIONE)
LIMITI IMPIEGO:	400 BAR a 100°C

MODELLO MODEL	INTERASSE INTERAXIS	USCITA OUT	ENTRATA IN
RM3/S3 RM3/S6	50 (54 OPTION)	1/2" GAS F	1/2" GAS M
RV3/F1 RV3/F3	50 (54 OPTION)	1/2" GAS F	1/2" NPT M



MANIFOLD VALVE

USE:	PROCESS, CHEMICAL AND PETROCHEMICAL INDUSTRY
TYPE:	BAR STOCK 3 VALVE TYPE FOR DIRECT MOUNTING
MATERIAL:	AISI 316 st. st.
CONNECTIONS:	GAS / NPT
PACKING:	PTFE (GRAPHOIL OPTION)
WORKING LIMITS:	400 BAR at 100°C



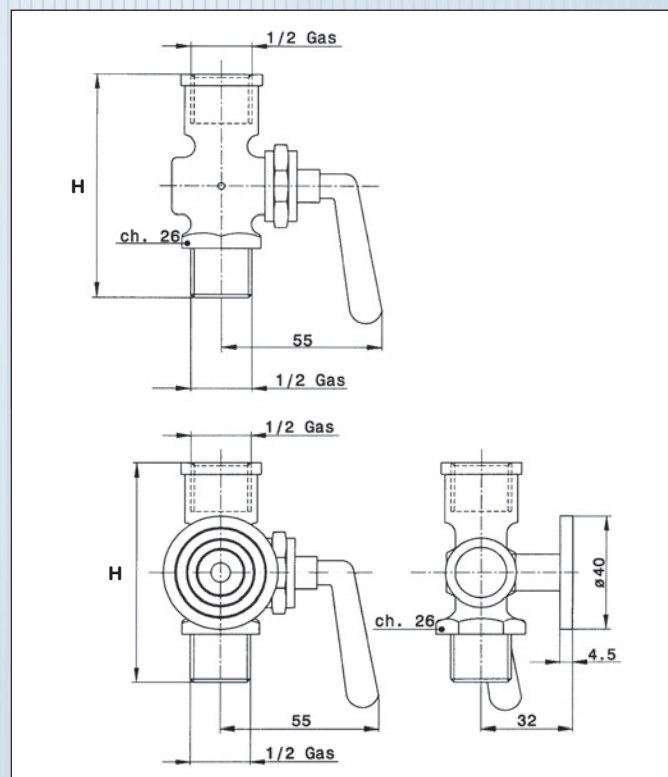
RUBINETTO 3 VIE CON FLANGIA DI PROVA

MATERIALE:	OTTONE OT58
CONNESSIONI:	GAS
TENUTA:	MECCANICA
LIMITI IMPIEGO:	PN.16 BAR / 90°C

THREE WAYS COCK WITH FLANGE FOR TEST

MATERIAL:	BRASS
CONNECTIONS:	GAS
SEAL:	MECHANICAL
WORKING LIMITS:	PN. 16 BAR / 90°C

MODELLO MODEL	ATTACCHI CONNECTIONS	H H
RC3/B1	1/4" GAS F x 1/4" GAS M	60
RC3/B2	3/8" GAS F x 3/8" GAS M	65
RC3/B3	1/2" GAS F x 1/2" GAS M	70



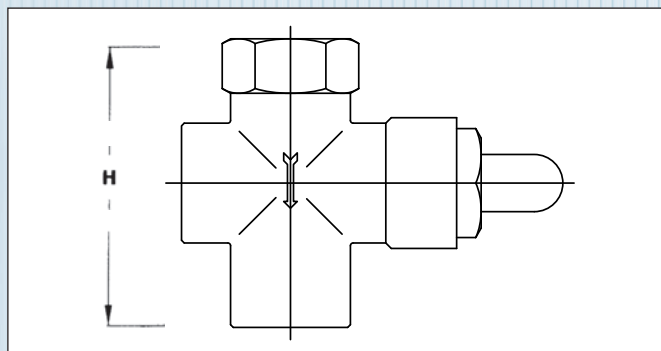
RUBINETTO A PULSANTE PER GAS

PRESSIONE MASSIMA DI PROCESSO: 6 BAR
TEMPERATURA DI ESERCIZIO: -10+50°C
CORPO: OTTONE

MODELLO MODEL	ATTACCHI CONNECTIONS	H H
RC6/B1	1/4" GAS F x 1/4" GAS F	53
RC6/B2	3/8" GAS F x 3/8" GAS F	53
RC6/B3	1/2" GAS F x 1/2" GAS F	53

PUSH-BUTTON GAS TAP

NOMINAL PRESSURE: 6 BAR
WORKING TEMPERATURE : -10 +50°C
BODY: BRASS



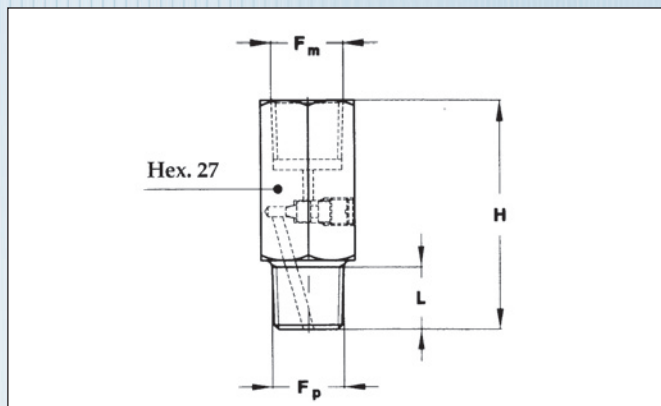
STABILIZZATORE REGOLABILE

PRESSIONE MASSIMA DI PROCESSO: 400 BAR
TEMPERATURA DI ESERCIZIO: -25+200°C
CORPO: OTTONE
VITE DI REGOLAZIONE: AISI 316

MODELLO MODEL	ATTACCHI CONNECTIONS	H H
RS4/B1	1/4" GAS F x 1/4" GAS M	60
RS4/B3	1/2" GAS F x 1/2" GAS M	70
RS4/B4	1/4" NPT F x 1/4" NPT M	60
RS4/B6	1/2" NPT F x 1/2" NPT M	70

NEEDLE DAMPENER

NOMINAL PRESSURE: 400 BAR
WORKING TEMPERATURE : -25+200°C
BODY: BRASS
ADJUSTMENT SCREW: AISI 316 st. st.



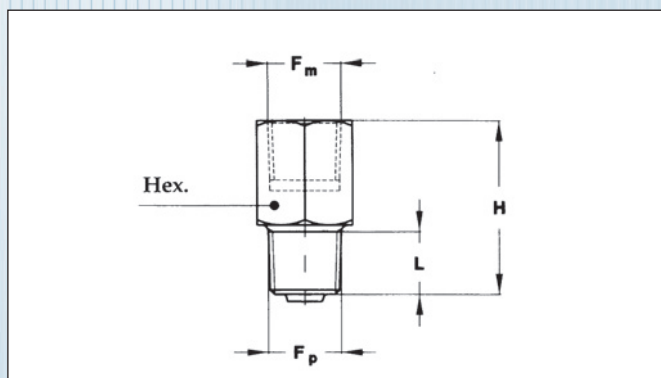
STABILIZZATORE A DISCO POROSO

PRESSIONE MASSIMA DI PROCESSO: 100 BAR
TEMPERATURA DI ESERCIZIO: -50+400°C
CORPO: OTTONE
DISCO METALLICO: AISI 316

MODELLO MODEL	ATTACCHI CONNECTIONS	H H
RS3/B1	1/4" GAS F x 1/4" GAS M	45
RS3/B2	3/8" GAS F x 3/8" GAS M	45
RS3/B3	1/2" GAS F x 1/2" GAS M	45

POROUS DAMPENER

NOMINAL PRESSURE: 100 BAR
WORKING TEMPERATURE : -50+400°C
BODY: BRASS
POROUS DISC: AISI 316 st. st.



RICCI CON ATTACCHI SALDATI

MATERIALE: RAME
LIMITI IMPIEGO : 25 BAR A 120°C
MATERIAL: COPPER
WORKING LIMITS: 25 BAR AT 120°C

MODELLO MODEL	ATTACCHI CONNECTIONS	H H
RP4/C1	1/4" GAS F x 1/4" GAS M	170
RP4/C2	3/8" GAS F x 3/8" GAS M	170
RP4/C3	1/2" GAS F x 1/2" GAS M	180

MATERIALE: ACCIAIO AL CARBONIO
LIMITI IMPIEGO : 100 BAR A 120°C / 50 BAR A 450°C
MATERIAL: CARBON STEEL
WORKING LIMITS: 100 BAR AT 120°C / 50 BAR AT 450°C

MODELLO MODEL	ATTACCHI CONNECTIONS	H H
RP4/F1	1/4" GAS F x 1/4" GAS M	180
RP4/F2	3/8" GAS F x 3/8" GAS M	180
RP4/F3	1/2" GAS F x 1/2" GAS M	190

MATERIALE: AISI 316
LIMITI IMPIEGO : 100 BAR A 120°C / 50 BAR A 450°C
MATERIAL: AISI 316 St. St.
WORKING LIMITS: 100 BAR AT 120°C / 50 BAR AT 450°C

MODELLO MODEL	ATTACCHI CONNECTIONS	H H
RP4/S1	1/4" GAS F x 1/4" GAS M	200
RP4/S2	3/8" GAS F x 3/8" GAS M	200
RP4/S3	1/2" GAS F x 1/2" GAS M	210
RP4/S6	1/2" NPT F x 1/2" NPT M	220

RICCI SENZA SALDATURE

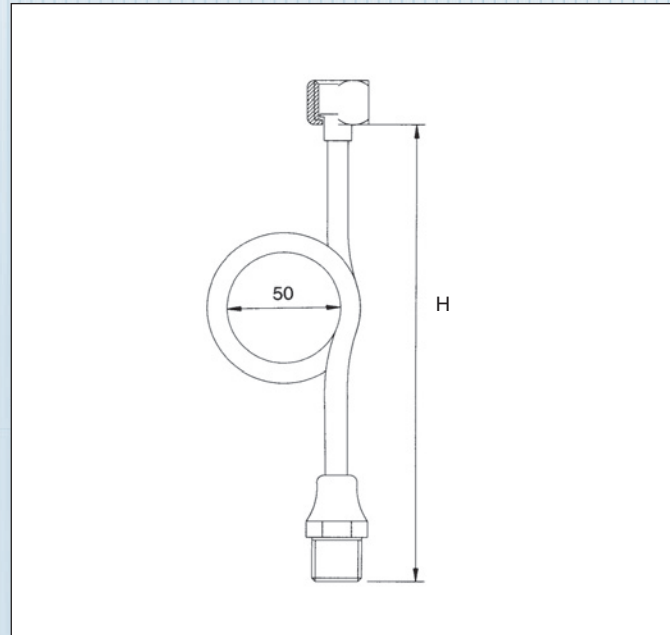
MATERIALE: ACCIAIO AL CARBONIO
LIMITI IMPIEGO : 200 BAR A 20°C / 150 BAR A 400°C
MATERIAL: CARBON STEEL
WORKING LIMITS: 200 BAR AT 20°C / 150 BAR AT 400°C

MODELLO MODEL	ATTACCHI CONNECTIONS	H H
RP8/F3	1/2" GAS F x 1/2" GAS M	240
RP8/F6	1/2" NPT F x 1/2" NPT M	240

MATERIALE: AISI 316
LIMITI IMPIEGO : 250 BAR A 20°C / 130 BAR A 400°C
MATERIAL: AISI 316 St. St.
WORKING LIMITS: 250 BAR AT 20°C / 130 BAR AT 400°C

MODELLO MODEL	ATTACCHI CONNECTIONS	H H
RP8/S3	1/2" GAS F x 1/2" GAS M	240
RP8/S6	1/2" NPT F x 1/2" NPT M	240

PIG TAILS WITH WELDED CONNECTIONS



PIG TAILS FROM SEAMLESS TUBE

